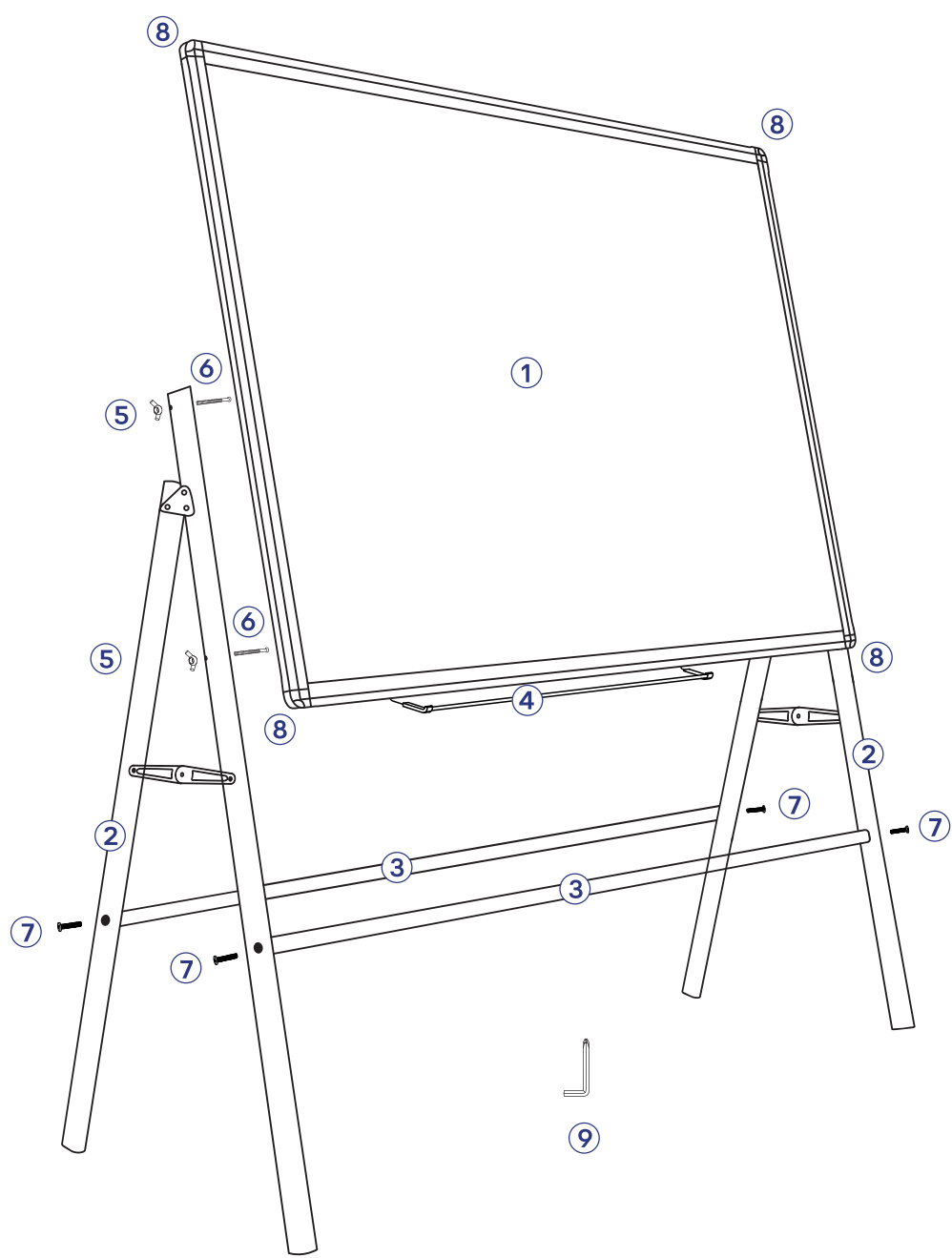


A-TYPE BRACKET MAGNETIC WHITEBOARD

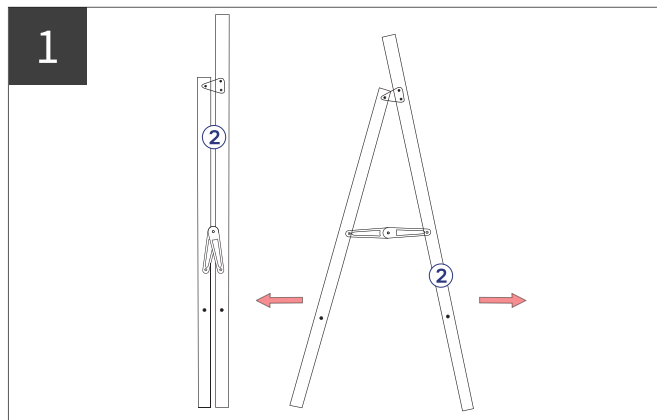
INSTALLATION INSTRUCTIONS



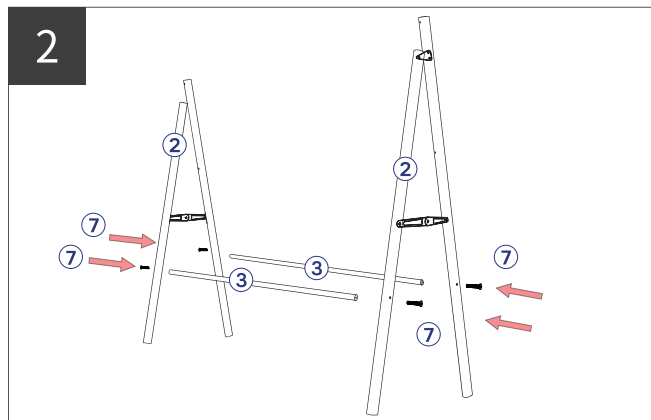
PARTS LIST

PART NUMBER	PART NAME	AMOUNT	PART NUMBER	PART NAME	AMOUNT
①	Whiteboard	1	⑥	M4*50 stepped screw	5
②	A-type bracket	2	⑦	M6*35mm screw	4
③	Crossbar	2	⑧	Decorative cover	4
④	Pen holder	1	⑨	4# Hex Wrench	1
⑤	Wing nut	5			

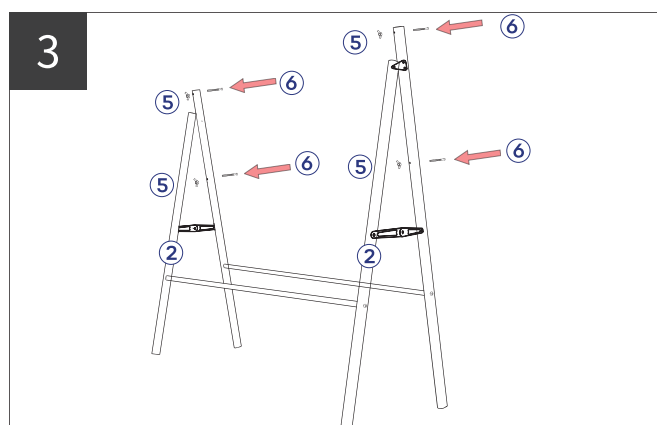
INSTALLATION STEPS



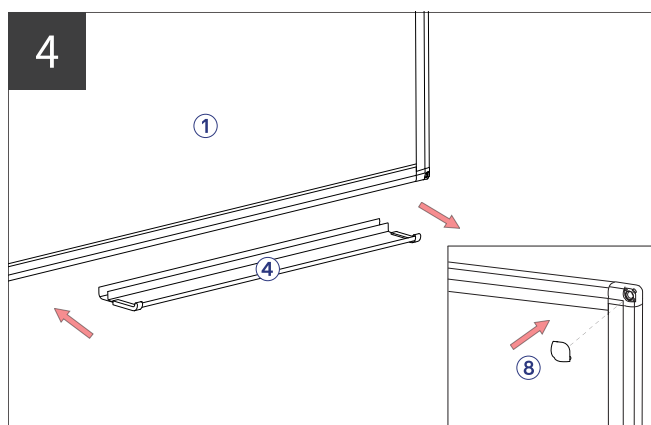
Unfold the A-type brackets (2)



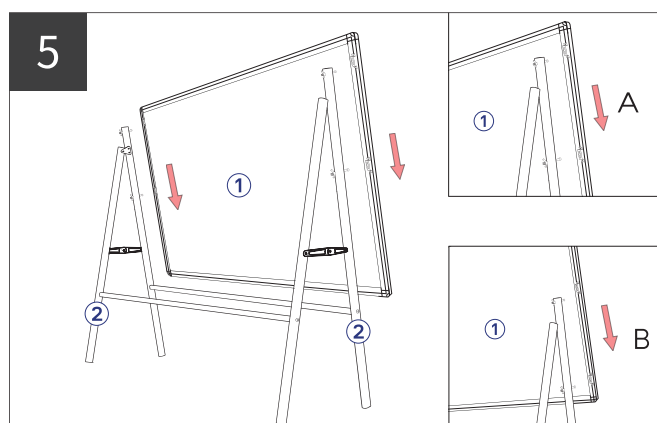
Install the crossbars (3) between A-type brackets (2) by M6*35mm screws (7)



Install the wing nuts (5) and M4*50 stepped screws (6) on the A-type brackets (2) as shown in the figure.



Install the pen holder (4) on the bottom of the whiteboard (1), and cover the decorative covers (8) on the four ABS corners of the whiteboard



When install the whiteboard (1) on the A-Type brackets (2), there are two kinds of heights that can be adjusted, height A and height B. You can choose the appropriate location to install.



Product installation completed, please enjoy your writing

Caution!

Do not allow children under three years old to contact with the small parts inside of the package, avoid swallowing;
Avoid injury during installation;

Keep the spare parts.